



Data-Logging Thermometer

TX-600N (1) Dual Probe input / 9 Type of Thermocouples

- IP66 CE
 RoHS RS-232

- IP66 Water-Proof
- Accept 9 T/C Types : K, J, E, T, B, R, N, S, C
- Dual Probes (T1-T2) input
- Data-Logger Built-In and software
- USB/RS-232 Output, with software
- Fine Adjustment Function
- Hi/Lo Alarm, Max./Min./Avg./Hold
- LED Back-Light
- CE and RoHS Approved



Data Logging

Specifications of TX-600N

| | |
|------------------------------|--|
| Input Types | K, J, E, T, B, R, N, S, C nine thermocouple types; with Dual-Channel input |
| Measurement Range | K : -200.0~+1370.0°C (-328.0~+2498.0°F) J : -200.0~+1200.0°C (-328.0~+2192.0°F) E : -210.0~+1000.0°C (-346.0~+1832.0°F) T : -220.0~+400.0 °C (-364.0~+752.0°F) B : +320.0~+1800.0°C (+608.0~+3272.0°F) R : - 20.0~+1700.0°C (-4.0~+3092.0°F) N : -200.0~+1300.0°C (-328.0~+2372.0°F) S : - 20.0~+1750.0°C (-4.0~+3182.0°F) C : 0.0~+2300.0°C (+32.0~+4172.0°F) |
| Accuracy* | ± 0.1% of rdg + 0.1°C (In 23±5°C operating environment) ± 0.1% of rdg + 0.2°C (Out of 23±5°C operating environment) ※Built-in cold junction compensation function. |
| Resolution | K, J, E, T, N, C Type : 0.1°C / 0.1°F B, R, S Type : 0.5°C / 0.5°F |
| Reading Rate* | Approx. 0.4 sec. |
| Logging Sampling Rate | 2 seconds to 120 minutes (User Selectable) |
| Memory | 16,000 readings x 2CH |
| Baud Rate | 57,600 |
| Main Functions | Switchable 9 kinds of thermocouple type input, Hi/Lo Alarm, T1-T2, Data hold, Max/Min/Avg Functions, USB/RS-232 interface, Perpetual calendar, Data-Logging, Switchable °C/ °F, AC/DC power, Battery sign and low battery warning, Auto / Manual shutdown, Calibration function, Large LED back-light, IP66 water and dust proof. |
| Output | a. Software with USB Interface cable, b. RS-232 Output |
| Power Source | One 9 V battery or AC Adaptor (option) |
| Input Connections | Standard mini thermocouple socket x 2 |
| Operating Environment | -20 ~ +60°C ; 0~100%RH |
| Dimensions/ Weight | 150 x 75 x 28 mm, Approx. 320g (battery included) |

*Above accuracy and sampling rate excludes errors generated by temperature probe.

Ordering Information :

※Can be purchased separately TU-6100, or purchase with accessories.

| | |
|------------------|--|
| ① TX-600N | Digital thermometer, 2ch. Data-Logger |
| ② Temp. Probes | LP series ※Please refer to catalog P38~P46 |
| ③ TU-RS232-W | RS-232 Interface cable |
| ④ TU-USB-W | USB computer interface cable |
| ⑤ TU-766C | Plastic carrying case |
| ⑥ TU-6019 / 6029 | AC Adaptor |

*Specifications are subject to change without notice.



TX-600N KIT

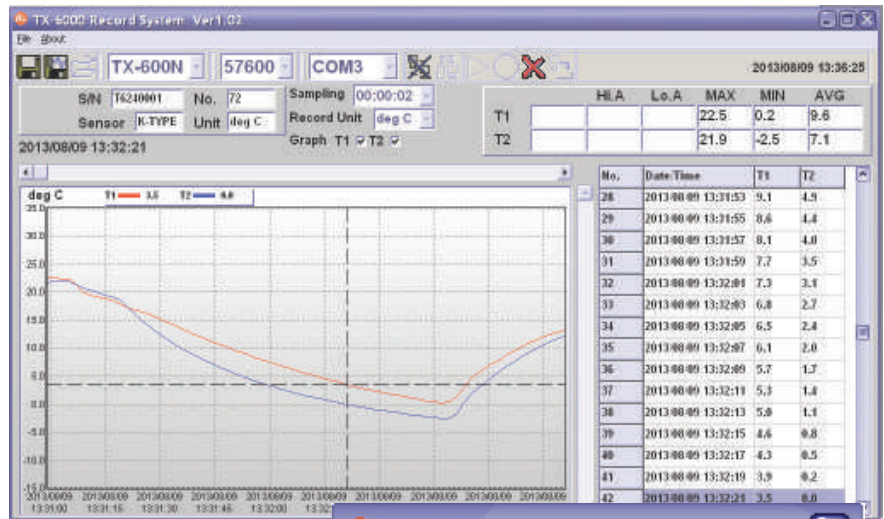


Data-Logger Software & Accessories

TX-600N⁽²⁾

Features of Software:

- Trend Line Display
- Graphic Zoom in, Zoom out and Storage
- Instrument Status Display
- Max. / Min. / Average
- Real-time Data Recording
- Alarm Display
- Temperature Conversion
- Saving and Loading Data
- Data Table View
- Recorded Data Download



- IP66 water-proof function
- Dual input for thermocouples

Complete Set of TX-600N KIT :

| No. | Model No. | Descriptions |
|-----|----------------|------------------------------|
| ① | TX-600N | Thermometer / Data Logger |
| ② | TU-USB-W | USB computer interface cable |
| ③ | TU-RS232-W | RS-232 Interface cable |
| ④ | Software USB | Software and Instructions |
| ⑤ | TU-6019 / 6029 | AC Adaptor |
| ⑥ | TU-609 | Battery 9V006P |
| ⑦ | User's manual | Multi-national user's manual |
| ⑧ | TU-655C | Plastic carrying case |

