

Microprocessor Indicator

TH-243 Temperature or Humidity Indicator
TH-244 Temperature and Humidity Indicator

- 4" Large LED Display.
- T/C, RTD, mV, mA, V, and Digital Input selection.
- Universal power supply : 90~264VAC, 50/60Hz.
- 2 Alarm output :
1st and 2nd Alarm are available for option.
- Standby and Latch mode can be combined with 8 different alarm functions.
- 4~20mA or 0~10Vdc retransmission and RS-485 communication(MODBUS RTU) are available for option.
- USB configuration port.



TH-243-3



TH-244-4

Specifications of TH-243 and TH-244

Model No.	TH-243	TH-244
Display	Temperature or Humidity	Temperature and Humidity
Dimensions	374 x 150 x 74 mm	374 x 300 x 74 mm
Input	Thermocouple : J . K . T . E . B . R . S . N . C (-200~+1800°C depends on the T/C type) RTD : DIN PT-100 ; JIS PT-100 (-200 ~ 850°C) Linear : 4~20mA ; 0~1V ; 0~5V ; 0~10V ; 1~5V	
Accuracy	±1 % , ±1 count	
Fine Adjustment	Zero and Span adjustable by external part	
Stability	Span : < ± 100ppm / range / c Zero : < ± 0.1°C% / count	
Response	Approx. 3 times / second or 0.5 times / second	
Operating Temp. Range	0°C ~ + 50°C (Indicator) ※When it connects with the sensor , the operating temp. range is depends on the sensor.	
Operating Humidity Range	0 ~ 90% RH , non - condensing (Indicator) ※When it connects with the sensor , the operating temp. range is depends on the sensor.	
Display Color	Red	
Power Supply	AC 90~264V , 50/60Hz Consumption : Less than 3VA	
Sampling Time	0.25 sec. (8 sample/sec) 125ms	
Alarm	Relay Contact Output : 10A/ 240 VAC (Resistive load)	
Alarm Functions	PV High Alarm / PV Low Alarm	
Retransmission	Current Output : 4~20mA (Resistive 600Ωmax.) Continuous Voltage Output : 0~1V ; 0~5V ; 0~10V ; 1~5V (Resistive 600Ωmin.)	
Rated Voltage	AC 90~264VAC 50/60Hz	
Housing / protection	Aluminum alloy (black) , shockproof , Dust proof , High strength Acrylic panel	

*Specifications are subject to change without notice.



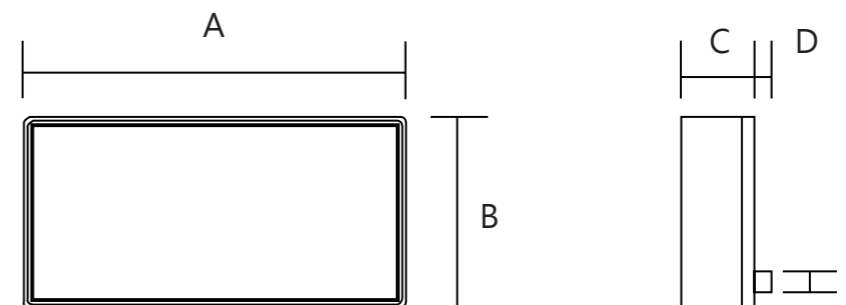
Microprocessor Indicator

TH-243 Temperature or Humidity Indicator
TH-244 Temperature and Humidity Indicator

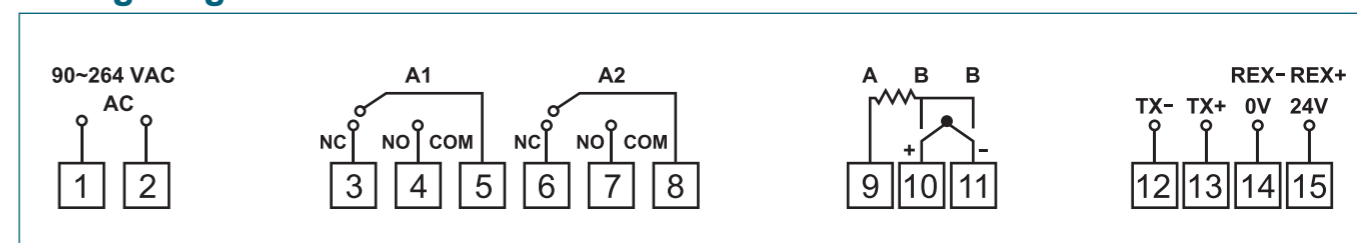
Dimension

(Unit: mm)

Model	A	B	C	D	E
TH-243	374	150	61.2	13	14
TH-244	464	300	61.2	13	14



Wiring Diagram



Ordering Information

EX : TH-24⁴ - ⁴ - ^T - ^R - ^N

Model	Code	Digits	Code	I/P	Code	Retransmission	Code	RS-485	Code
Temperature or Humidity	3	3 Digits	3	T/C	T	None	N	None	N
Temperature and Humidity	4	4 Digits	4	PT100 (RTD)	D	4~20mA	R	RS-485	C
				0~60mV	L	0~10V	V		
				0~10V	V	Other	O		
				0~24mA	M				
				RS485	C				

※The standard sensor is built - in.
The built - out sensor is available, please indicate the signal cable length and the fixed way.