



Data-Logging Thermometer

TX-600N (1) Dual Probe input / 9 Type of Thermocouples

- IP66 CE
- RoHS RS-232

- IP66 Water-Proof
- Accept 9 T/C Types : K, J, E, T, B, R, N, S, C
- Dual Probes (T1-T2) input
- Data-Logger Built-In and software
- USB/RS-232 Output, with software
- Fine Adjustment Function
- Hi/Lo Alarm, Max./Min./Avg./Hold
- LED Back-Light
- CE and RoHS Approved



Data Logging

Specifications of TX-600N

Input Types	K, J, E, T, B, R, N, S, C nine thermocouple types; with Dual-Channel input
Measurement Range	K : -200.0~+1370.0°C (-328.0~+2498.0°F) J : -200.0~+1200.0°C (-328.0~+2192.0°F) E : -210.0~+1000.0°C (-346.0~+1832.0°F) T : -220.0~+400.0 °C (-364.0~+752.0°F) B : +320.0~+1800.0°C (+608.0~+3272.0°F) R : - 20.0~+1700.0°C (-4.0~+3092.0°F) N : -200.0~+1300.0°C (-328.0~+2372.0°F) S : - 20.0~+1750.0°C (-4.0~+3182.0°F) C : 0.0~+2300.0°C (+32.0~+4172.0°F)
Accuracy*	± 0.1% of rdg + 0.1°C (In 23±5°C operating environment) ± 0.1% of rdg + 0.2°C (Out of 23±5°C operating environment) ※Built-in cold junction compensation function.
Resolution	K, J, E, T, N, C Type : 0.1°C / 0.1°F B, R, S Type : 0.5°C / 0.5°F
Reading Rate*	Approx. 0.4 sec.
Logging Sampling Rate	2 seconds to 120 minutes (User Selectable)
Memory	16,000 readings x 2CH
Baud Rate	57,600
Main Functions	Switchable 9 kinds of thermocouple type input, Hi/Lo Alarm, T1-T2, Data hold, Max/Min/Avg Functions, USB/RS-232 interface, Perpetual calendar, Data-Logging, Switchable °C/ °F, AC/DC power, Battery sign and low battery warning, Auto / Manual shutdown, Calibration function, Large LED back-light, IP66 water and dust proof.
Output	a. Software with USB Interface cable, b. RS-232 Output
Power Source	One 9 V battery or AC Adaptor (option)
Input Connections	Standard mini thermocouple socket x 2
Operating Environment	-20 ~ +60°C ; 0~100%RH
Dimensions/ Weight	150 x 75 x 28 mm, Approx. 320g (battery included)

*Above accuracy and sampling rate excludes errors generated by temperature probe.

Ordering Information :

※Can be purchased separately TU-6100, or purchase with accessories.

① TX-600N	Digital thermometer, 2ch. Data-Logger
② Temp. Probes	LP series ※Please refer to catalog P38~P46
③ TU-RS232-W	RS-232 Interface cable
④ TU-USB-W	USB computer interface cable
⑤ TU-655C	Plastic carrying case
⑥ TU-6019 / 6029	AC Adaptor

*Specifications are subject to change without notice.



TX-600N KIT

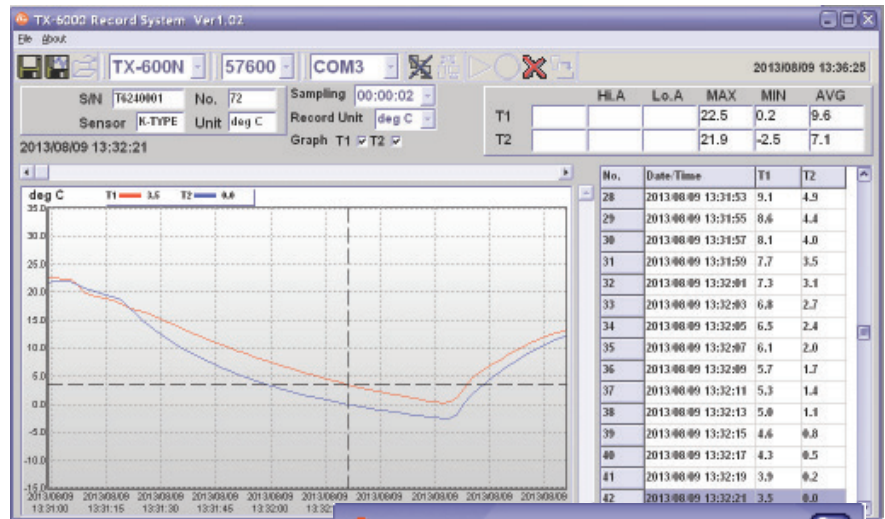


Data-Logger Software & Accessories

TX-600N⁽²⁾

Features of Software:

- Trend Line Display
- Graphic Zoom in, Zoom out and Storage
- Instrument Status Display
- Max. / Min. / Average
- Real-time Data Recording
- Alarm Display
- Temperature Conversion
- Saving and Loading Data
- Data Table View
- Recorded Data Download



- IP66 water-proof function
- Dual input for thermocouples

Complete Set of TX-600N KIT :

No.	Model No.	Descriptions
①	TX-600N	Thermometer / Data Logger
②	TU-USB-W	USB computer interface cable
③	TU-RS232-W	RS-232 Interface cable
④	Software CD	Software and Instructions
⑤	TU-6019 / 6029	AC Adaptor
⑥	TU-609	Battery 9V006P
⑦	User's manual	Multi-national user's manual
⑧	TU-655C	Plastic carrying case

